

SF-02

**Code Product - SF02**

**SAFETY CAN with GLASS LEVEL**  
For Pump / Pressure mode of operation



**NOTE**  
Safety cans and Level Glass assembly are supplied totally mounted and tested, ready for installation.

Examples of safety cans installation in Gravity mode, with Blue Main support, for different Blender models equipped with internal Pumps

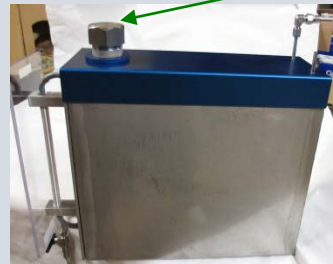


Each Safety Can is labelled with fuel name

Front hard transparent level protection

Level glass protected by an aluminium body. Level glass is mounted with 3 O-ring FPKM, suitable for gasoline and toluene.

Safety can is equipped with a cork for manual filling.



Note:  
Safety cans have to be placed below the blender. Blender Pumps will transfer fuels from the safety cans to Blender. Trolleys for Safety cans + blender are also available from ROFA France.

Connect Viton tubing on the stainless steel connector to Blender back fuel input.

One over flow tubing has to be connected to client external drain.

**CAUTION**  
During Safety cans fuel filling  
By any means  
**IMPERATIVELY** operator must be present to avoid over filling.



## Different Safety Cans filling options

Manual filling using local means



Safety can is equipped with a cork for manual filling.

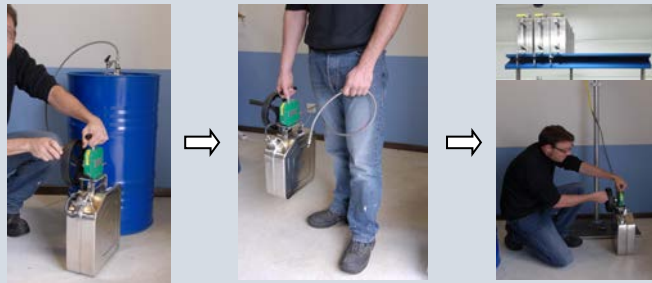
This filling procedure is mainly used for Safety cans installed on a trolley with Blender pumps model.



Manual filling with ROFA France Fuel pump system code: JP-01



Fuel Pump Assembly system



Easy 3 steps Safety cans filling procedure

### Nitrogen System

Safety cans filling with Nitrogen  
ROFA France system code: BL-032 to 036-N



2 to 6 drums



Special fuel valve input option for this option



Blender without burettes & Pumps / Blender with burettes (Gravity)

Fuels transfer from main drums to Safety cans

### Nitrogen System

Safety cans filling with Nitrogen  
ROFA France system code: BL-032 to 036-N



2 to 6 drums



Fuels transfer from main drums directly to Blender back input