

B-04

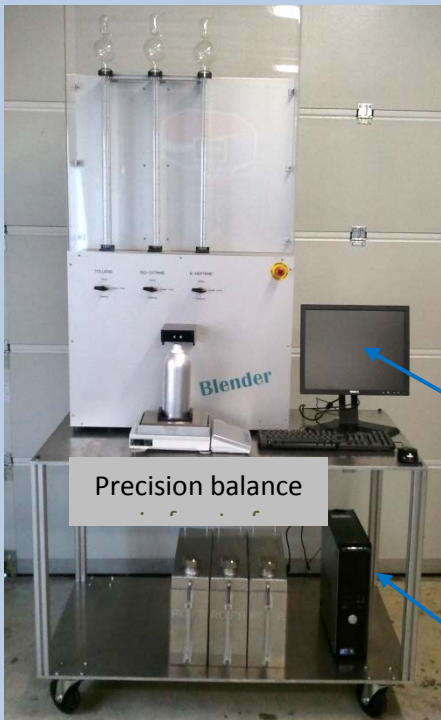
AUTOMATED BLENDER Pumps model

Code "AB" = Auto + Burettes
Code "P" = Pumps

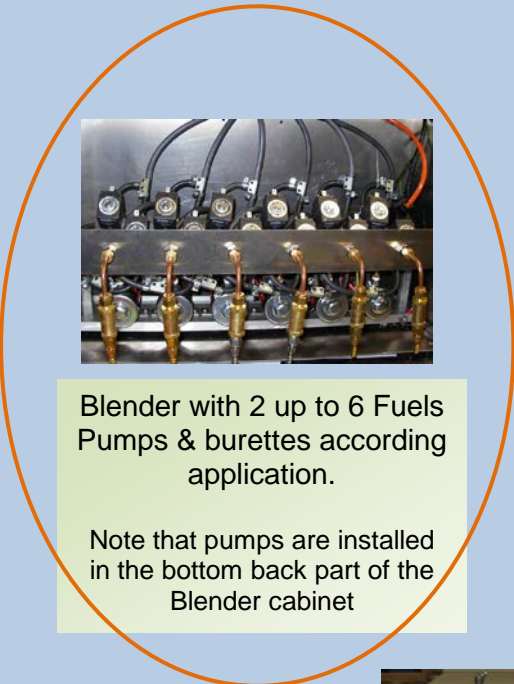
With Burettes, Pumps Fuels Supply & Fuels safety cans

PLC CONTROL – TOUCH SCREEN DISPLAY PANEL – Code PC
Can be supplied with PLC (code PLC)

Blender with 2 up to 6 burettes according application
3 or 4 Burettes for OCTANE
2 Burettes for CETANE



All models CE marked.
No fuels storage inside Blender Cabinet
SAFETY FIRST



Blender with 2 up to 6 Fuels Pumps & burettes according application.
Note that pumps are installed in the bottom back part of the Blender cabinet

Blender PC Control / Touch Display Panel

Trolley support

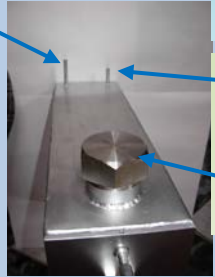
Compact complete system

No maintenance.
Friendly use.
High precision.
Easy Fuels filling.
Data's storing



Each front Safety can Model SF01 is labeled with Fuels name

Pumps fuels aspiration tubing



For Safety Cans filling Options se "SF02 Leaflet"
Vent
Manual Filling access.

Note that pictures are not contractual

PRODUCTS BLENDING RANGE



Code "**AB**"
(Auto + Burettes)

Code "**G**"
Gravimetric Mode

Code "**ST**" supply:
*With Burettes
Fuels safety cans
Main blue support*

Code description

OC = Octane
CE = Cetane

Number of fuels:
3 to 4 for Octane
2 for Cetane

System supplied as per pictures
Code "**ST**"

Code "**AB**"
(Auto + Burettes)

Code "**P**"
Pumps Mode

Code "**ST**" supply:
*With Burettes
Pumps Fuels Supply
Fuels safety cans
Trolley*



Code "**A**"
(Auto)

Code "**G**"
Gravimetric Mode

Code "**ST**" supply:
*With Burettes
Fuels safety cans
Main blue support*

Blender supplied alone without support & Safety cans
Code "**AL**"

Code "PC" or "PLC" for control unit

Code "**A**"
(Auto)

Code "**P**"
Pumps Mode

Code "**ST**" supply:
*With Burettes
Pumps Fuels Supply
Fuels safety cans
Trolley*



Code "**M**"
(Manuel)

Code "**G**"
Gravimetric Mode

Code "**ST**" supply:
*With Burettes
Fuels safety cans
Main blue support*

Example of code:

OC-CE-6-AB-G-PC

OC = Octane
CE = Cetane
6 = number of fuels
AB = Auto + burettes
G = gravimetric
PC = Control by PC

Code "**M**"
(Manuel)

Code "**P**"
Pumps Mode

Code "**ST**" supply:
*With Burettes
Pumps Fuels Supply
Fuels safety cans
Trolley*



Fuels Blender filling system & safety cans

Safety cans SF01
Gravimetric Blender



Safety cans SF02
Pumps Blender



JERRICAN Pump FT100
Manual Fuels transfer



NITROGEN filling systems for 2 up to 6 fuels

